

Acamarachi - LED Bollard





Acamarachi - LED Bollard

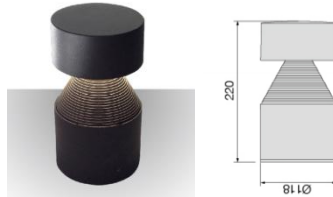


A selection of accessories
means **Versatile Style**

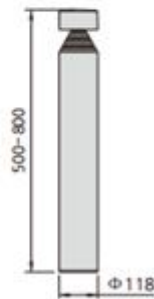




Mini version



Dimensions



Accessories: Decorative Fins or PC cover

Product Family Name: Acamarachi Midi Bollard
Product Family Code: ALB.MIDI.9.>Size<.>finish<.>Cover<
LED Brand: Cree XB-D
LED Colour Temp: 3000k, 4000K, 5000k
CRI: >70

Power Supply: Integrated

Optical Type: diffused
Optical Distribution: symmetrical
Optical Cover/Lens: PC
Dimmable: N/A
Photocell: N/A
Power Cable: N/A
IP Rating: IP65
Mounting: Integral base plate
Aiming Angles: N/A

Input Voltage: 100v to 240v
Input Frequency: 50-60Hz
Control Signal: N/A

Chassis Material: Die-cast aluminium
Chassis Colour: Black or Silver

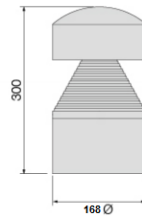
Optical Cover/lens material: PC
 Anchor bolts (Optional) or Detachable root

Mechanical Accessories:
Weight (Kg): 2.2, 2.8
Height (mm): 220,500, 800,
System Power: 9w
Luminous flux: 700lm
LED Luminaire efficacy: 78Lm/w

Working Temp: -25 to +50°C
Lifetime: >50,000hrs



Mini version



Dimensions



LED CREE12×1W 100V-240V 900lm
3000K / 4200K



Shown without secondary PC cover

Product Family Name: Acamarachi Maxi Bollard
Product Family Code: ALB.MAXI.12.>Size<.>finish<.>Cover<
LED Brand: Cree XB-D
LED Colour Temp: 3000k, 4000K, 5000k
CRI: >70

Power Supply: Integrated

Optical Type: diffused
Optical Distribution: symmetrical
Optical Cover/Lens: PC
Dimmable: N/A
Photocell: N/A
Power Cable: N/A
IP Rating: IP65
Mounting: Integral base plate
Aiming Angles: N/A

Input Voltage: 100v to 240v
Input Frequency: 50-60Hz
Control Signal: N/A

Chassis Material: Die-cast aluminium
Chassis Colour: Black or Silver

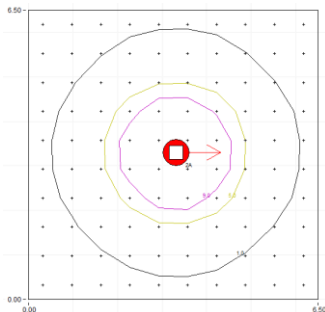
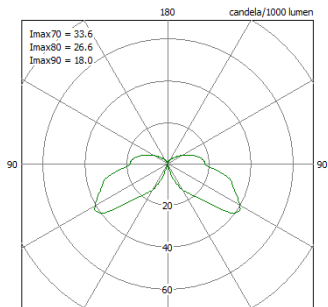
Optical Cover/lens material: PC
 Anchor bolts (Optional) or Detachable root.

Mechanical Accessories:
Weight (Kg): 5.1, 6
Height (mm): 300, 800, 1000
System Power: 12w
Luminous flux: 900lm
LED Luminaire efficacy: 75Lm/w

Working Temp: -25 to +50°C
Lifetime: >50,000hrs



Photometry



Paint finish

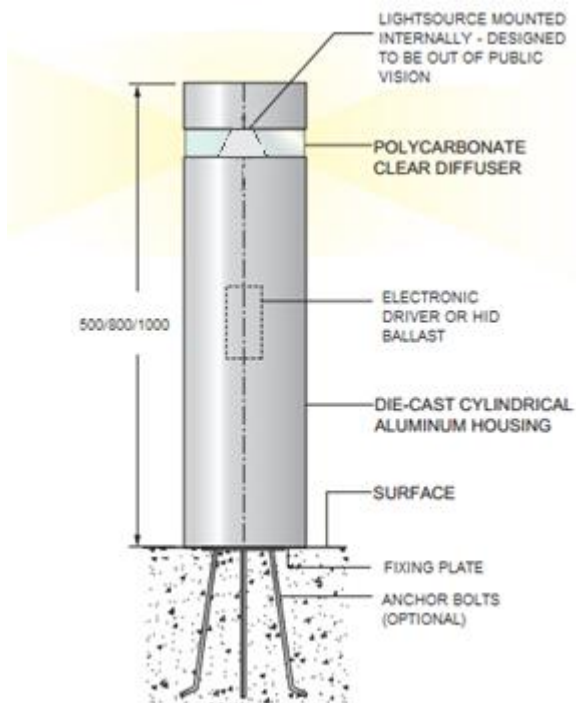
Black



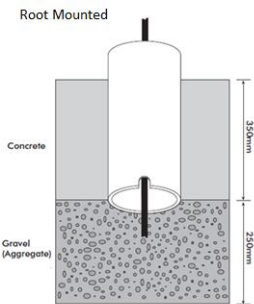
Silver



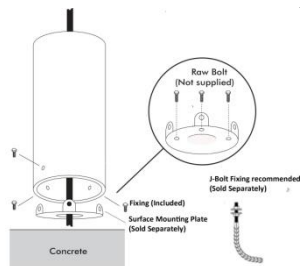
Composition & Fixing



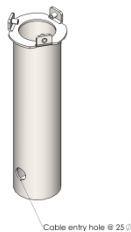
Optional Mounting



Surface Mounting (Kit required – purchased separately)



Optional – Detachable root



Cable entry hole @ 25°

